

THE SERAQUANT READER

MAXIMUM CONFIDENCE IN YOUR BODY FLUID SCREENING RESULTS

ELIMINATE UNCERTAINTY OF THE “NAKED EYE” RESULT READING

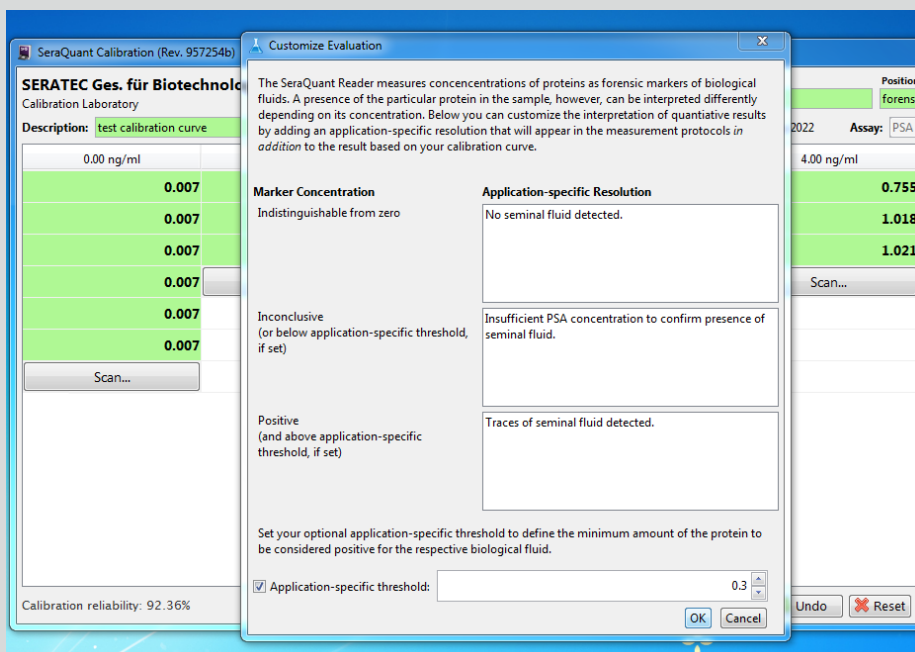
The SeraQuant is an instrument for the quantitative analysis of the SERATEC® test cards for the detection of human specific body fluid markers. It significantly improves the subjective interpretation of the body fluid markers by providing an objective, quantitative result.

Have you ever been uncertain whether the test result line is strong enough to call it a positive? The sophisticated software of the SeraQuant accurately distinguishes between negative and positive reactions at the test cut-off level. This is accompanied by an increase in sensitivity compared to other detection methods.



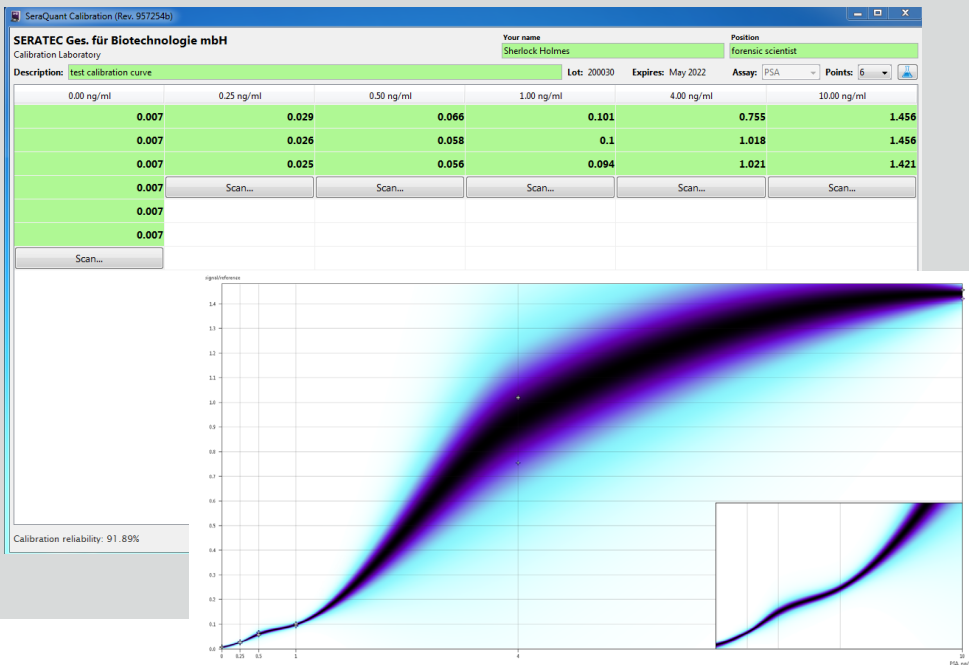
CALIBRATE FAST, QUANTITATE ACCURATELY

The calibration application provides a step-by-step procedure for the device calibration by measuring known concentrations of the protein marker. It takes only 20 minutes to measure a calibration curve.



SERATEC®
EXCELLENCE IN FORENSIC BIOLOGY

Moreover, laboratories can set their own thresholds as to negative, inconclusive or positive results, depending on their validation data and interpretational approach with regards to the body fluid marker. Application-specific resolutions can be defined as per laboratory internal guidelines.



After the calibration curve is finished, it can be used with the entire batch of the SERATEC® tests on this instrument. The quantitation itself is done in a few seconds. Barcodes on the test cards ensure that the correct calibration curve will be selected.



DOCUMENT CONSISTENTLY WITH FULL TRACEABILITY

The instrument is equipped with a powerful documentation tool that generates and stores detailed protocols with traceability data, result scans and other information relevant to the test measurement. Protocols can be exported as PDF files. Raw XML data is also accessible for software integration.

BENEFIT FROM THE MULTI-PARAMETER QUANTITATION

The SeraQuant can be universally used with SERATEC® PSA Semiquant for the detection of semen, SERATEC® HemDirect for the detection of blood and SERATEC® AmylaseTest for the detection of saliva.

SERAQUANT® Measurement Report
 Measurement time: 2020-08-05 13:03:20

Case #: Test 001
 Specimen: dilution
 Description: negative (buffer)

Measurement result

Negative: PSA concentration indistinguishable from zero.

Error (false neg.) probability < 7.02%

Measurement Origin
 Organization: SERATEC Ges. für Biotechnologie mbH
 Department: Calibration Laboratory
 Ernst-Ruhstrat-Str. 5
 37077 Göttingen, Niedersachsen, DE
 Operator: SERATEC Laboartory, Technician

Traceability Details
 Lot number: 200030, expires 2022-05, est. sensitivity = 0.09 ng/ml
 Calibration: test calibration curve, reliability = 92.4%
 by: Sherlock Holmes, forensic scientist

SERAQUANT® Measurement Report for Case #: Test 001

Image #1 (signal/reference = 0.00818)

SERAQUANT® Measurement Report
 Measurement time: 2020-08-05 13:02:22

Case #: Test 001
 Specimen: dilution
 Description: PSA dilution 0.4 ng/mL

Measurement result

Positive: PSA = $0.42^{+0.465}_{-0.102}$ ng/mL @ 97% confidence

Error (false pos.) probability < 0.01%

Measurement Origin
 Organization: SERATEC Ges. für Biotechnologie mbH
 Department: Calibration Laboratory
 Ernst-Ruhstrat-Str. 5
 37077 Göttingen, Niedersachsen, DE
 Operator: SERATEC Laboartory, Technician

Traceability Details
 Lot number: 200030, expires 2022-05, est. sensitivity = 0.09 ng/ml
 Calibration: test calibration curve, reliability = 92.4%
 by: Sherlock Holmes, forensic scientist

SERAQUANT® Measurement Report for Case #: Test 001

Image #1 (signal/reference = 0.05032)